

### It's time for possibilities.

**Presbyterian Homes & Services' Supportive Independent Living at The Meadows** provides individuals 55+ who are homeless or at-risk of being homeless with quality housing and supportive services to live life to the fullest.



Permanent Supportive Independent Housing at The Meadows allows eligible individuals the opportunity to create a pathway to health and wellness—a chance to age successfully through evidence-based interventions and lifestyle modifications.

#### Qualifications:

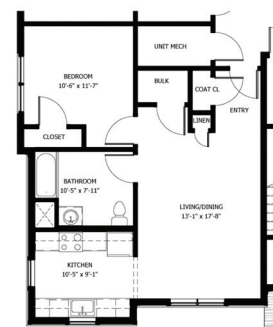
- 55+
- Medicaid recipient or Medicaid eligible
- Individuals capable of living independently with assistance needed to remain stably housed
- At risk for homelessness, homeless, or inappropriately housed

#### Supportive Independent Living offers:

- Care Navigators who serve as resident advocates to ensure quality services and help individuals achieve optimum health and wellness
- A Wellness Coach who oversees health and wellness events/seminars, encourages residents to use the Wellness Center, and assists residents with developing personalized wellness plans
- A Resident Support Driver who provides transportation to medical appointments and off-site outings
- Additional supports including:
  - Person-centered service plans
  - On-going assessments and goal development
  - Eligibility assistance for other supports and benefits
  - Medical coordination
  - Learning Lab access
  - Wellness Center access
  - Start-up kits and supplies
  - Subsidy support

#### Amenities

- 51 units within Meadows Senior Living
- Fully furnished
- Newly constructed
- 24-hour emergency maintenance
- On-site management
- On-site maintenance
- Smoke-free community
- Elevator
- Laundry suites on each floor
- Off-street parking
- Central heat and air conditioning
- Dishwasher



For more information about how we can help you or someone you love create life-changing possibilities, call **315.235.2816** or visit us online at [www.communitywellnesspartners.org](http://www.communitywellnesspartners.org).



COMMUNITY WELLNESS PARTNERS  
— Making life about you —

Affiliation of LutheranCare® and Presbyterian Homes & Services



# COMMUNITY WELLNESS PARTNERS

## Making life about you

Affiliation of LutheranCare® and Presbyterian Homes & Services

Combining over 150 years of service to our region, **Community Wellness Partners** is an affiliation of LutheranCare® and Presbyterian Homes & Services. Our faith-based, non-profit organizations offer the most complete continuity of health and wellness services for older adults in Oneida County:

- Supportive Independent Housing
- Welker Dialysis Center
- State-of-the-Art Wellness Center
- Memory Care Cottages
- Dedicated Parkinson's Residence
- Companion Care
- Home Care
- Care Management
- Adult Daycare, including social and medical care
- Independent Living
- Assisted Living
- Short-Term and Outpatient Rehabilitation, including pulmonary and respiratory therapies
- Skilled Nursing, including palliative, bariatric, and dementia care
- Dedicated Alzheimer's Residence

Whatever level of care you may desire, **Community Wellness Partners is your partner in health.** Our approach to quality care allows you to create a pathway to health and wellness—a chance to celebrate your unique gifts and talents, and find opportunities to continue to learn and grow.

It's time for possibilities. Call **315.853.5515** or **315.797.7500** or visit us online at **[www.communitywellnesspartners.org](http://www.communitywellnesspartners.org)**.

**Cultivate** your health.



**Discover** your community.



**Follow** your purpose.



**Nurture** your imagination.



LutheranCare®

Presbyterian  
HOMES & SERVICES